

shoreline 4X4
4WD ACCESSORIES

Shoreline 4x4 Extreme Series Bullbar X-1



Fitting instructions for LC200 2015 on

Front TOW points only - Rated to 3.75T - NOT FOR SNATCHING

www.slx4x4.com.au (08) 9444 2946
126 Hector St W - OSBORNE PARK W.A. 6017

A gap between the headlights must be maintained, the bar is adjustable to sit at many different positions, we have located bar forward of headlights to avoid any potential contact and have cutout indent around the corner plastic protrusion, you may wish to purchase rubber pinch weld from clark rubber to cover this gap

shoreline 4 X 4

4WD ACCESSORIES

1. Congratulations on purchasing your very own Shoreline 4x4 Extreme Series Bulbar. To start, clear an area around the front of your car and unwrap the bar.



- 2) Remove factory bumper completely including the grille off in 1 piece, you will later separate the grille from the bumper, you can find videos on youtube regarding removal. Once fully undone all side clips from under fender and grill engine bay area you then pull hard on the plastic covers connecting lights and grille together.



- 3) Remove grill, front bumper bar, bumper reinforcement and lower bumper support brackets. Also remove bumper retaining clips on side guard, and below headlight as indicated including the plastic side bumper retaining & front retaining if you wish.



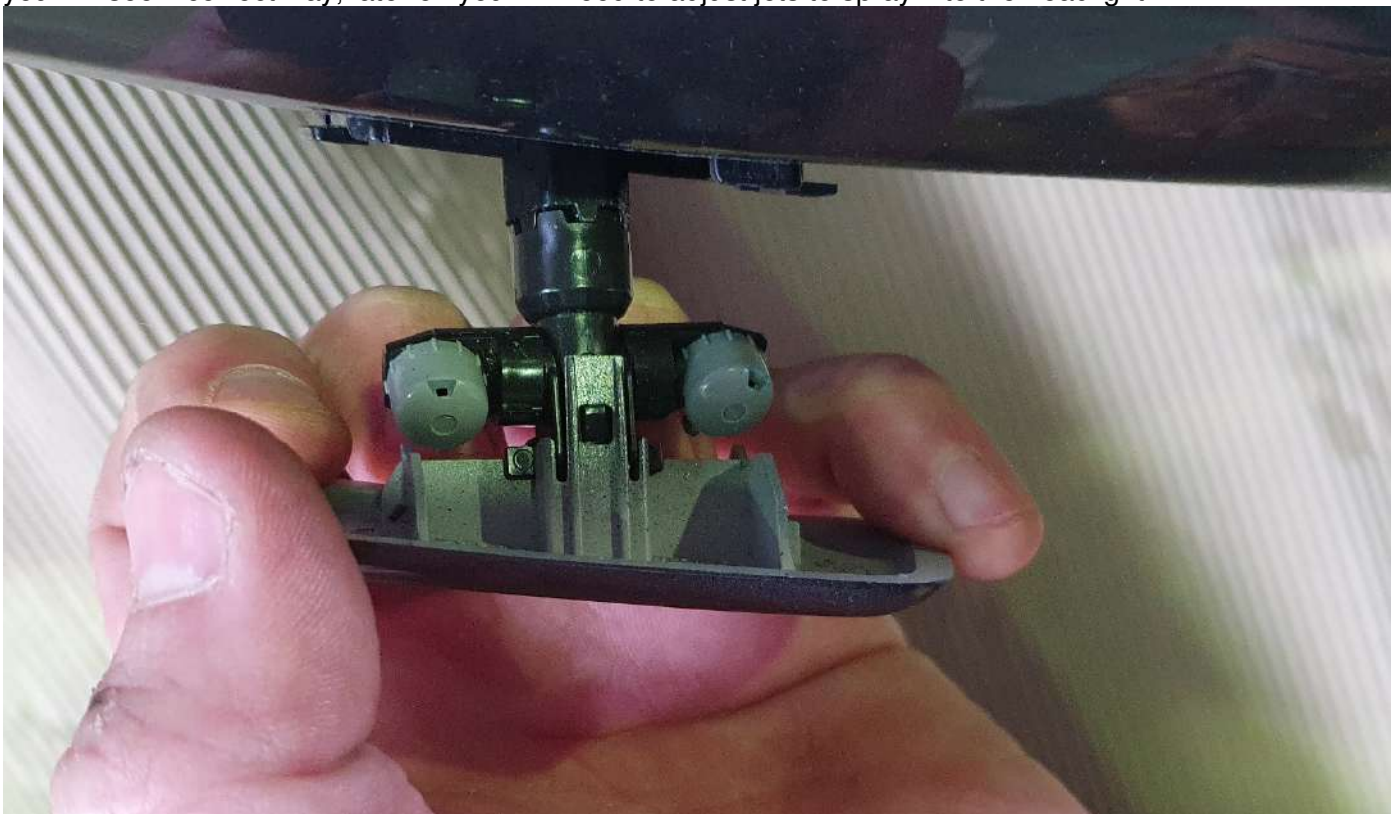
4) Fit mounting hardware, The spacer brackets first then the cradle. The spacer brackets can be tight but keep cradle loose incase you need to move left or right

5) if you are fitting a winch drill out the welded rivots and remove the reinforcement section. If drilled correctly it will just come out.



6) You can now remove all wiring & water harness from the original plastic bumper, when removing the sensors make sure you mark them which way is correct up and down and which side is which.

The water Jets pull the cap forward, undo the cap and take off, then remove backing retaining clip and slide grey sleeve down, you can then remove water jet by pushing black little clip inwards and will come away from the bumper. When you install into the new bulbar you may find its upside but regardless with the water jets you follow the profile of the bulbar and the black angle of the water jet housing, when you go to reinstall you will see if correct way, later on you will need to adjust jets to spray into the headlight.



Bulbar

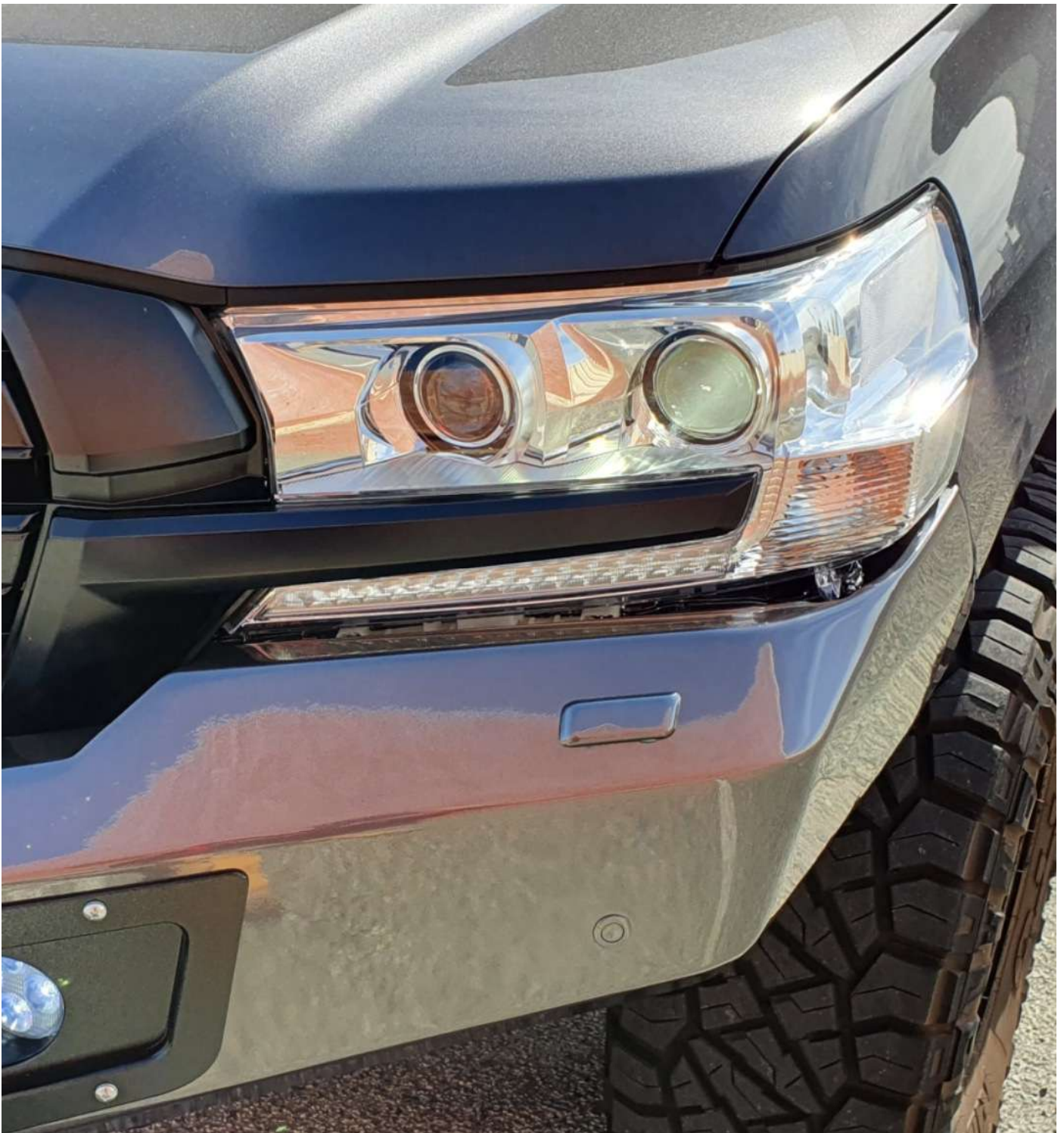
with water jets orientation does not matter as long as cap sits flush, at the end you will remove jets and turn to face headlights



7) Put the harness in place, You will cable tie the harness to the rib supports in the bulbar, small slots should exist in various points of the bulbar to slide a cable tie in, otherwise you can purchase adhesive retainers (not supplied) Just ensure your supplied LED fog lights have enough cable to reach the existing harness, the new LED spot lights may require you to connect upside down, EG flip connector upside down and plug into harness if LED not working.

8) You can now semi fit the bulbar and mark the guards, you can either mark with white paint pen to suit profile take off or cut with bar on which ever suits.

9) A gap between the headlights must be maintained, the bar is adjustable to sit at many different positions, we have located bar forward of headlights to avoid any potential contact and have cutout indent around the corner plastic protrusion, you may wish to purchase rubber pinch weld from clark rubber to cover this gap.



10) When fitting the bar, if you choose to use pinch weld now is the time install it as can not be installed once bar is on, You may also choose to use 10mm Wide and 5mm thick adhesive foam in 2 places.

- 1) You can put adhesive foam between the front of the fender and bar (Prevent rubbing if you go offroad)
- 2) On the inside of the qtr panel facing outwards also prevent rubbing as these inside metal sits very close to the outside of the bulbar fold.

11) The QTR panels are held in place in part by the front bumper and retaining plastics, You can in fact manipulate these panels to change the angle of the metal front qtr panels to better align to the bulbar if you wish, when you push on them you will notice they turn inside or outside depending where you press, the panels change slightly after you remove factory plastics & cut inner guards.

12) if installing a winch below is installed with suggested control box location, if you wish to have access with manual plug in cable , we suggest you buy extender which plugs into top of control box with a lead to locate in engine bay etc.

